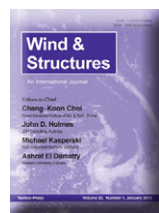


SEGUIMIENTO DE LA PRODUCCIÓN DE ARTÍCULOS PUBLICADOS EN REVISTAS CON FACTOR DE IMPACTO DEL PERSONAL DEL II

ISI-BIBLIOTECA

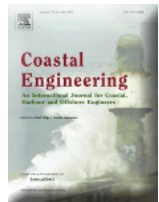
Para informar sobre la publicación de artículos indizados en revistas del *Journal Citation Report* (JCR) por parte del personal académico del Instituto de Ingeniería, y con ello darle seguimiento a la meta institucional de un artículo del JCR por investigador y por año, además se incluyen los artículos, proceedings y capítulos de libros sin factor de impacto, de esta manera la **USI-Biblioteca** mantiene un servicio de alerta mensual sobre este tipo de producto académico con base en el monitoreo de la *Web of Science*.



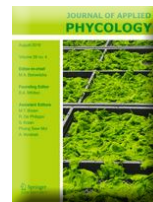
Berny-Brandt, E. A., & Ruiz, S. E. (2016). Reliability over time of wind turbines steel towers subjected to fatigue. *Wind and Structures, an International Journal*, 23(1), 75-90. doi:10.12989/was.2016.23.1.075. FI: **0.746**



Cuevas Jiménez, A., Euán Ávila, J. I., Villatoro Lacouture, M. M., & Silva Casarín, R. (2016). Classification of beach erosion vulnerability on the yucatan coast. *Coastal Management*, 44(4), 333-349. doi:10.1080/08920753.2016.1155038. FI: **1.433**



Briganti, R., Torres-Freyermuth, A., Baldock, T. E., Brocchini, M., Dodd, N., Hsu, T. -, . . . Postacchini, M. (2016). Advances in numerical modelling of swash zone dynamics. *Coastal Engineering*, 115, 26-41. doi:10.1016/j.coastaleng.2016.05.001. FI: **2.841**



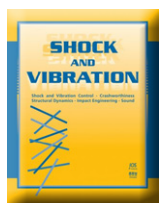
De los Cobos-Vasconcelos, D., García-Cruz, E. L., Franco-Morgado, M., & González-Sánchez, A. (2016). Short-term evaluation of the photosynthetic activity of an alkaliphilic microalgae consortium in a novel tubular closed photobioreactor. *Journal of Applied Phycology*, 28(2), 795-802. doi:10.1007/s10811-015-0612-7. FI: **2.372**



Campuzano, R., & González-Martínez, S. (2016). Characteristics of the organic fraction of municipal solid waste and methane production: A review. *Waste Management*, 54, 3-12. doi:10.1016/j.wasman.2016.05.016. FI: **3.829**



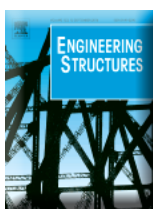
Durán-Álvarez, J. C., Avella, E., Ramírez-Zamora, R. M., & Zanella, R. (2016). Photocatalytic degradation of ciprofloxacin using mono- (au, ag and cu) and bi- (au-ag and au-cu) metallic nanoparticles supported on TiO2 under UV-C and simulated sunlight. *Catalysis Today*, 266, 175-187. doi:10.1016/j.cattod.2015.07.033. FI: **4.312**



Concha, A., & Alvarez-Icaza, L. (2016). Identification of torsionally coupled shear buildings models using a vector parameterization. *Shock and Vibration*, 2016. doi:10.1155/2016/6731928. FI: **0.880**



García-Illescas, MA, M., & Alvarez-Icaza, L. (2015). A matrix projection method for on line stable estimation of 1D and 3D shear building models. *Mechanical Systems and Signal Processing*, doi:10.1016/j.ymsp.2016.03.019. FI: **2.771**



Garcia, Silvia; Padilla, Carlos; De la Rosa, Luis. (2015). A Simulator For Optimizing Roller-Compacted Concrete Mix Designs. *M2D2015: Proceedings of the 6th International Conference on Mechanics and Materials In Design*, 421-424.



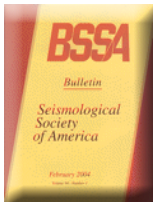
McMillan, H., Montanari, A., Cudenneq, C., Savenije, H., Kreibich, H., Krueger, T., . . . Xia, J. (2016). Panta rhei 2013–2015: Global perspectives on hydrology, society and change. *Hydrological Sciences Journal*, 1-18. doi:10.1080/02626667.2016.1159308. FI: **2.182**



Hernandez, M., Inti-Ramos, O., Guadalupe-Bañuelos, J., Bucio, E., & Covelo, A. (2016). Correlation of high-hydrophobic sol-gel coatings with electrochemical and morphological measurements deposited on AA2024. *Surface and Interface Analysis*, 48(7), 670-675. doi:10.1002/sia.5976. FI: **1.018**



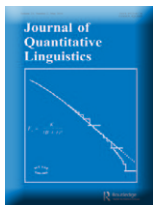
Ramírez Zamora, R. M., Espejel Ayala, F., Solís López, M., González Barceló, O., Gómez, R. W., Pérez Mazariego, J. L., . . . Schouwenaaers, R. (2016). Optimisation and analysis of the synthesis of a cellular glass-ceramic produced from water purification sludge and clay. *Applied Clay Science*, 123, 232-238. doi:10.1016/j.clay.2015.11.012. FI: **2.586**



Lermo, Javier; Santoyo, Miguel A.; Jaimes, Miguel A.; Antayhua, Yanet; Chavacan, Marcos. (2016). Local Earthquakes of the Mexico Basin in Mexico City: kappa, Q, Source Spectra, and Stress Drop. *Bulletin of the Seismological Society of America*. 106 (4):1423-1437; 10.1785/0120150189 . FI: **2.311**

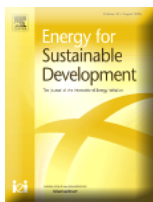


Torres, L., Aguiñaga, J. A. D., Besançon, G., Verde, C., & Begovich, O. (2016). Equivalent liénard-type models for a fluid transmission line. *Comptes Rendus - Mecanique*, doi:10.1016/j.crme.2016.04.004. FI: **0.988**



López-Escobedo, F., Solorzano-Soto, J., & Sierra Martínez, G. (2016). Analysis of intertextual distances using multidimensional scaling in the context of authorship attribution. *Journal of Quantitative Linguistics*, 23(2), 154-176. doi:10.1080/09296174.2016.1142324. FI: **0.359**

{ ACUMULATIVO AL MES DE AGOSTO DE 2016: 100 }



Martínez-Montejo, S. A., & Sheinbaum-Pardo, C. (2016). The impact of energy efficiency standards on residential electricity consumption in Mexico. *Energy for Sustainable Development*, 32, 50-61. doi:10.1016/j.esd.2016.02.010. FI: **2.379**